



Update on ROSA (Roll-Out Solar Array) Achievements

Space Power Workshop 2022

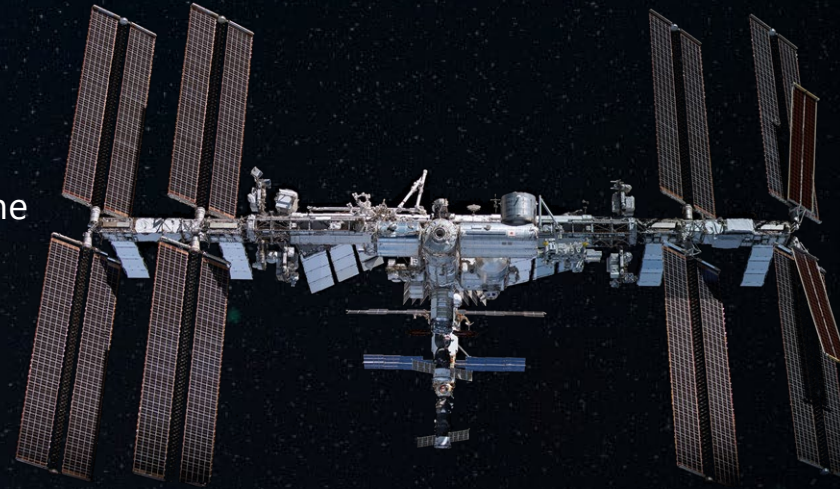
Matt LaPointe

Mechanical Design Manager

Redwire Deployable Solutions - Goleta

iROSA Solar Arrays

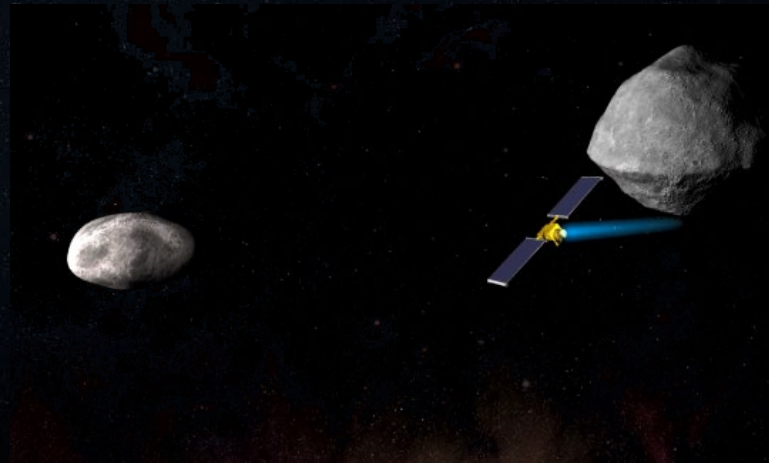
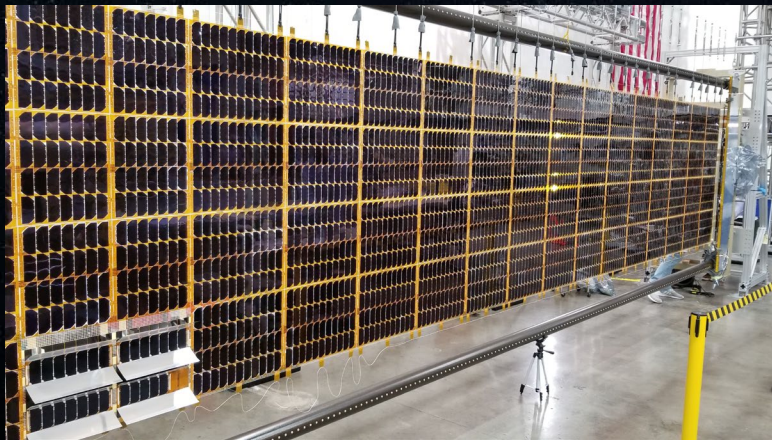
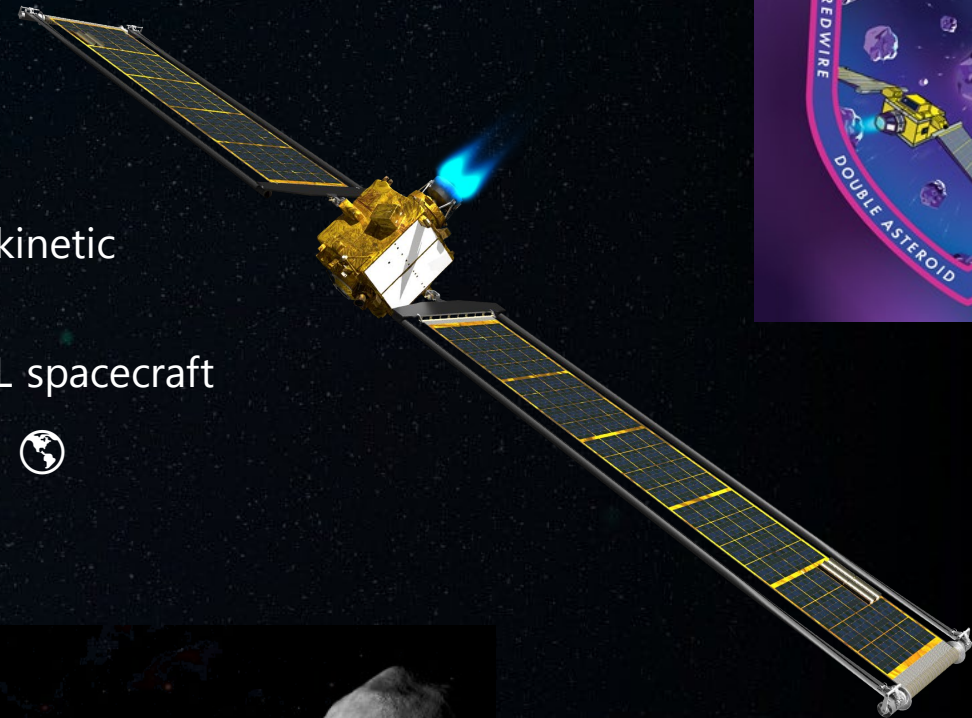
- Features:
 - Folded Mandrel ROSA design – Maximized Stowed Volume
 - 6.5" Diameter Boom – Massive Torque Margin
 - 28 kW BOL Flex Blanket featuring Spectrolab XTJ Cells
 - Designed for complete EVA operation
- Wings 1 & 2 successfully deployed in June 2021
- Wings 3 & 4 delivered in March/April 2022 for November launch
- Wings 5 & 6 currently in production



DART ROSA Solar Arrays

NASA Double Asteroid Redirect Test (DART) Mission

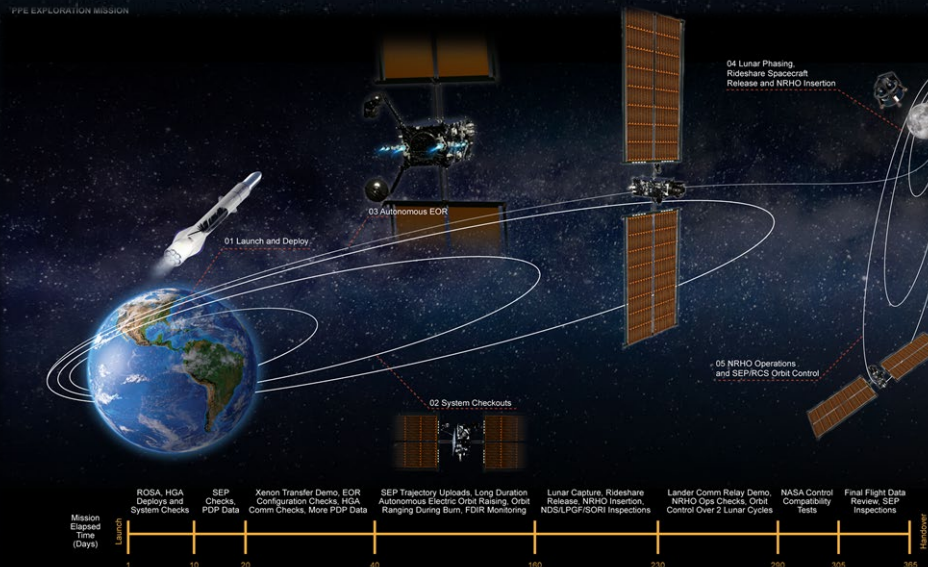
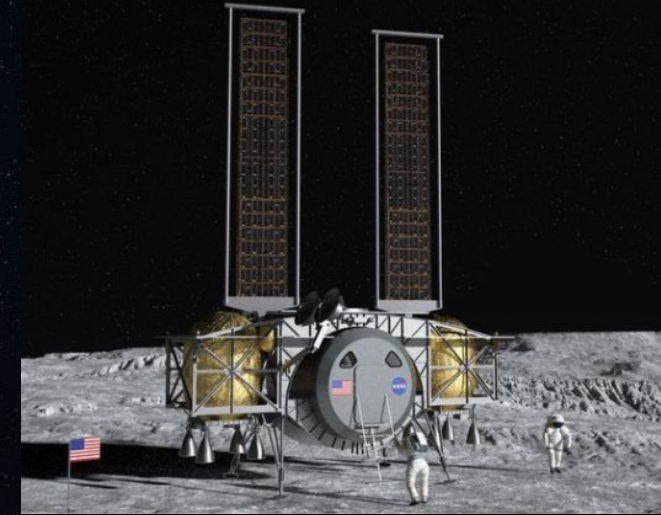
- First-ever spacecraft to demonstrate asteroid deflection by kinetic impactor on asteroid target
- Redwire delivered two 3.3 kW BOL ROSA arrays for JHU/APL spacecraft
- 🌐 Designed and built by Redwire's Planetary Defense Team 🌐
- Both arrays successfully deployed in November 2021!



Lunar ROSA Applications

ROSA to the Moon!

- Maxar Power Propulsion Element (PPE) - two 33 kW BOL ROSA arrays in Production
- Astrobotic Lunar Lander – 10 kW Vertical Lunar Surface ROSA (funded thru CDR)
- NASA Phase II SBIR Lunar Lander – 3 kW Ground Qualification Hardware
- Various other HLS projects in works





Questions

Thank you for your time and consideration!

Questions or More Info: matt.lapointe@redwirespace.com

